

## SEG Foundation – Student Field Trip 2023

Tertiary-age Volcanic-hosted Epithermal Precious Metal Deposits of the Walker Lane, NV

September 23 - 30, 2023

### – PARTICIPANT INFORMATION PACKET –

---

<u>Table of Contents</u>	<u>Page</u>
<b>CHECKLIST</b>	
1. Prior to Departure	1
2. Arrival	2
3. Field Trip Procedures and Requirements	2
4. General Information	2
5. Appendix – Maps and Satellite Images	4

---

Please read the following instructions and recommendations carefully.

**Anyone arriving in Las Vegas (LAS), Nevada without the designated safety gear and appropriate clothing ([see below](#)) will not be permitted to participate in the field trip.**

### **CHECKLIST, Instructions and Recommendations**

#### 1. Prior to Departure

- Information Required by SEG:
  - Passport information: All participants **must** submit to SEGF their Passport information (name, number, country of issue, date of expiry) via the Medical Emergency and Travel Related Information Form, provided by SEGF – **this is required**.
  - Proof of Insurance Coverage: Participants **must** provide to SEGF **proof of insurance coverage valid in USA**. Carry your insurance ID card with you at all times during the field course.
  - Liability Waiver Form: Prior to participation in the field trip, you **must** sign and submit to SEGF a **liability waiver form**, provided by SEGF.
  - Medical Emergency and Travel Related Information Form: Participants must complete all sections of this form, sign and date, and return with a photo copy of passport and proof of insurance (electronic versions acceptable).
- Visas: Ensure you have the visas required by USA for your nationality.
- Designated Safety and Field Gear – Personal Protective Equipment (PPD): All participants **must** bring the following PPE required for all mine visits—there will be no opportunity to obtain these items once the field trip begins:
  - **Long pants and Long-sleeved shirts – mandated at all times**
  - **Hardhat (lamp bracket optional)**
  - **STEEL-TOE boots (no light-weight Trekking boots)**
  - **Reflective vest**
  - **Gloves**
  - **Safety eye protection (not sunglasses).**
- Medications: Bring all prescription medications and your prescriptions – carry these with you, do not place in your checked baggage.

**SEG FOUNDATION STUDENT FIELD TRIP 2023**  
**Information Packet**

- Photocopy your Passport: Carry a photocopy of your Passport with you, keep it safe and separate from your Passport.
- Luggage: Pack lightly and use soft luggage if possible.

**2. Arrival**

- Upon arrival at LAS, collect your luggage and make your way to the Shuttle Buses. Take the Rental Car Shuttle Bus to the Rental Car Center – you will be met there.
- Participants will need money for incidental expenses. SEGF provides transportation during the course, plus lodging, lunches and some breakfasts. Dinners and incidental expenses are not provided. Most establishments accept credit cards, but you should have some cash (US\$) on hand. Participants can withdraw US\$ from bank ATM machines at LAS Airport or any ATM machines accessible during the trip.

**3. Field Trip Procedures and Requirements**

- a) Behavior: Participants must at all times behave with respect to others and follow instructions of the Field Trip Leaders. Failure to comply results in immediate expulsion and exit from the trip at any point; individual(s) are responsible for additional costs attributable to their exit.
- b) Personal Protective Equipment: Each participant *must wear in the field at all times*:
  - long-sleeved shirts and long pants
  - steel-toe boots (no light-weight trekking boots)
  - hard hat
  - eye protection
  - high visibility reflective vest and gloves
- c) Safety: Mine and project site personnel will review mine safety precautions; be attentive – you will be entering potentially hazardous environments. Always follow – *never lead ahead* of site personnel.
- d) Pictures: Do not take any pictures at site unless permissions are granted – this includes presentations given by mine personnel and during field visits. Ask first. You will be advised accordingly.
- e) Rock samples: Please request permission from the site personnel. Participants are responsible for their own rock samples; be aware of any weight limits that may be imposed by your return travel arrangements.

**4. General Information**

- Time Zone: USA, Pacific Daylight Time; GMT/UTC -7.
- Climate: You will be travelling close to 38° North Latitude, equal to southern Spain, northern Turkey, and central Japan (northern hemisphere summer) but at elevations ranging from 3,000 to +7,000 ft (1,000 to 2,300 m). The weather in Nevada will be northern hemisphere summer (days mid 80°F / 27C); however, temperatures will be lower these higher elevations.

**SEG FOUNDATION STUDENT FIELD TRIP 2023**  
**Information Packet**

- Weather protection: Bring rain gear, wind breaker and layers for cool mornings/evenings. Carry sunscreen, lip balm, sunglasses, and a hat with a brim.
- Sundries: Bring toiletries and be prepared to room with other courteous and interesting students.
- Mobile phone use: Travelers from outside the USA should avoid expensive roaming charges. Most carriers offer limited-duration International call packages allowing affordable calling and text messaging to your home country while travelling overseas. Check with your provider *before* departure, and make sure your device will operate in USA. USA country code is +1; Northern Nevada area code is 775.
  - Calls *from* USA: You will need to dial: 011 (Country Code)+(Area Code)+(Number)
  - Calls *within* USA: From your mobile phone you will need to dial *as if you are calling USA from your home country*.
    - US and Canadian nationals – you will need to dial: +1+(Area Code)+(Number).
    - Australian nationals – you will need to dial: 0011+1+(Area Code)+(Number).
    - Peru nationals – you will need to dial 00+1+(Area Code)+(Number)

APPENDIX – Maps and Satellite Images (in order of trip itinerary relevance)

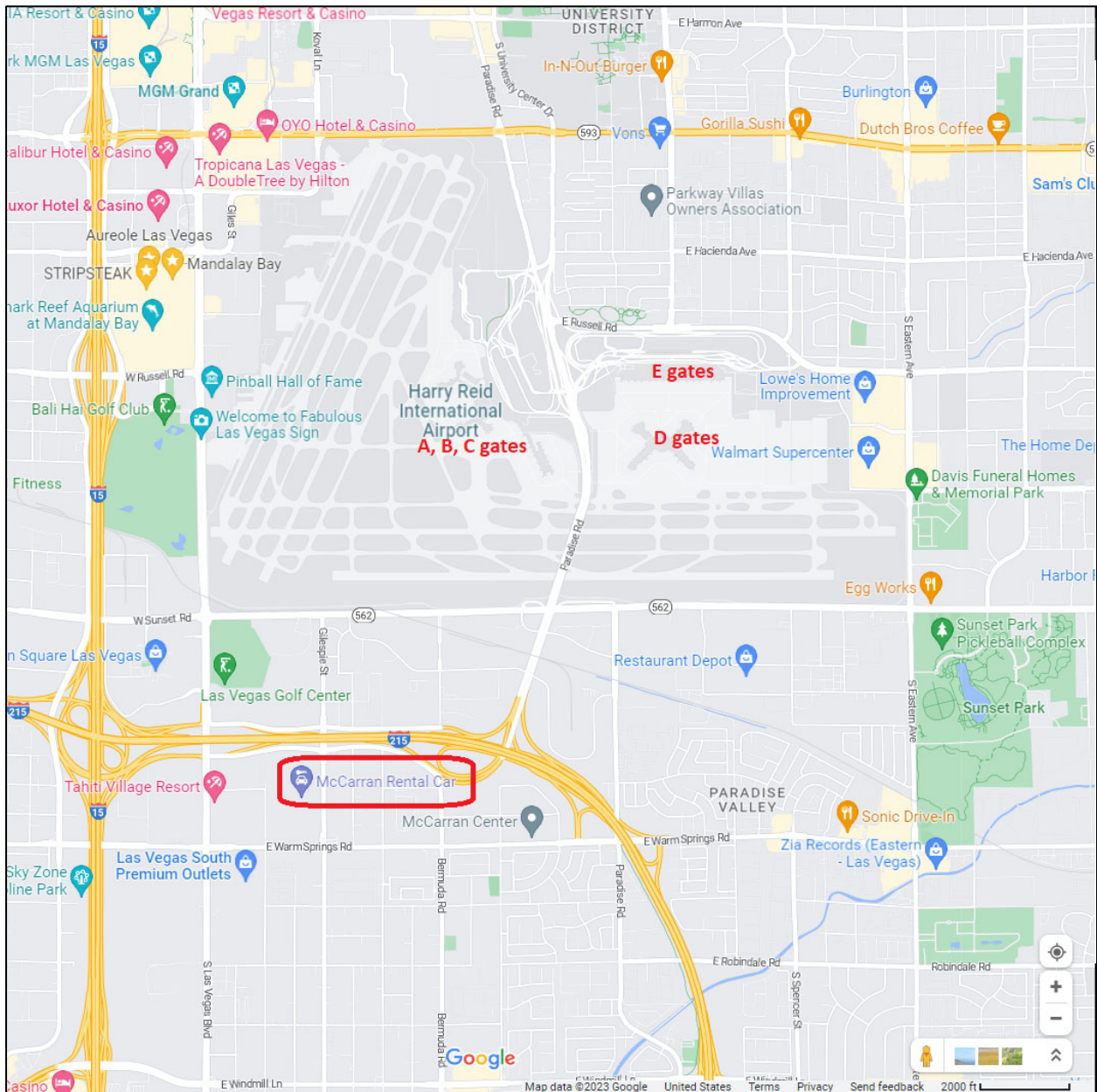


Figure 1: Harry Reid Int'l Airport (LAS) showing location of Gates A through E, and the McCarran Rental Car Center. Board free airport shuttle from any Terminal to reach the McCarran Rental Car Center.



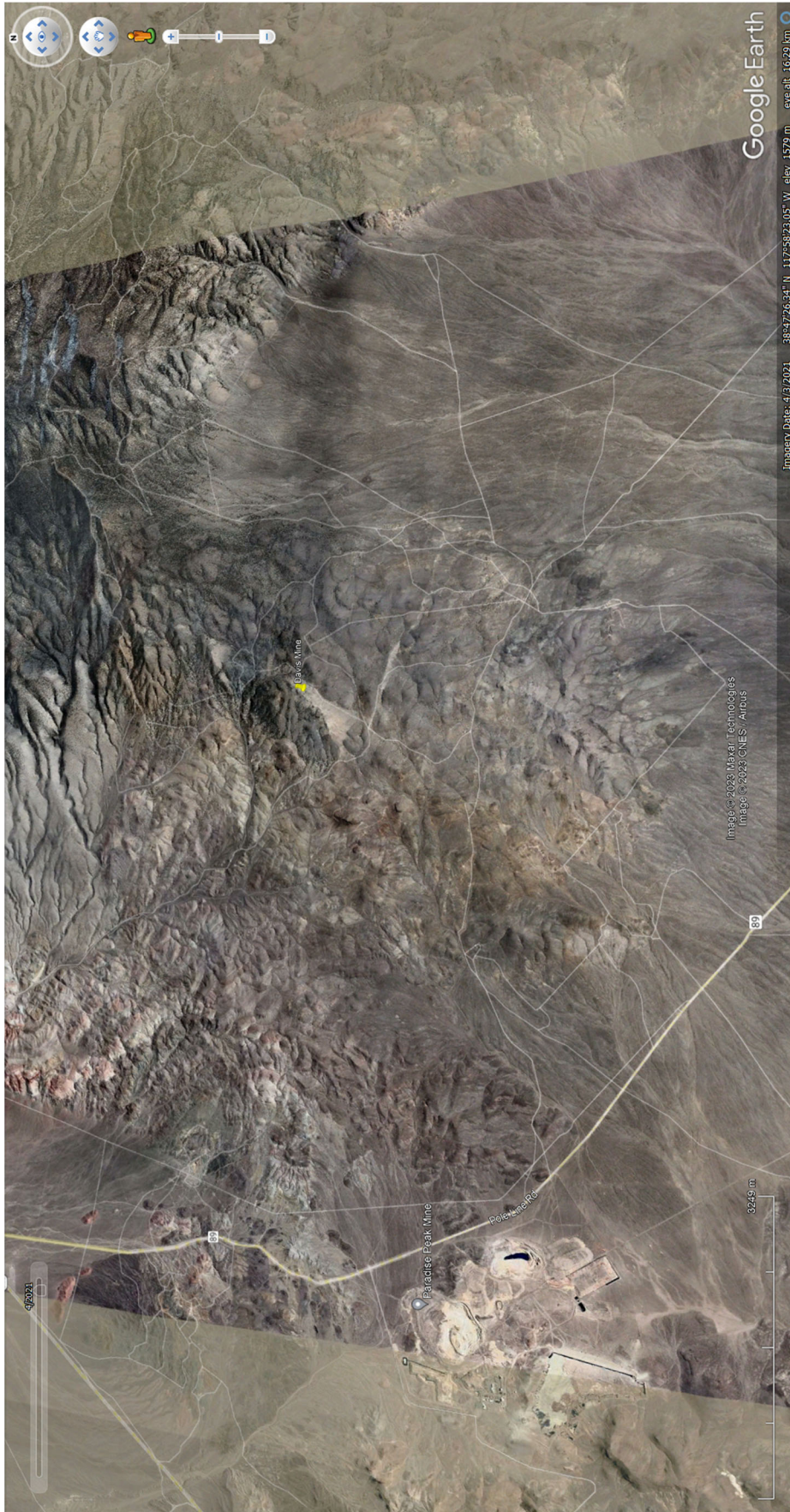


Figure 2: Satellite image of the Paradise Peak mine and Davis Mine (Yellow Pin). Note the bleach rock associated with the mined areas = alteration associated with mineralization.





Figure 3: Satellite view of Round Mountain mine complex, on the west flank of the southern Toiyama Range, in Big Smokey Valley, NV. Note the scale of the operation compared to Fig. 1. This is a massive open pit operation. Just to the north is the Gold Hill prospect which was . The round Green circles are radial irrigation (watering) for agriculture – the clustered four circles SW of the mine fills one sq mile.





Figure 4. Regional satellite view of central Nevada, showing town of Tonopah and location of the Midway Gold prospect (Yellow pin). The Tonopah project of Viva gold lies predominantly in the pediment just to the north of Midway, covered largely by Quaternary sediments.



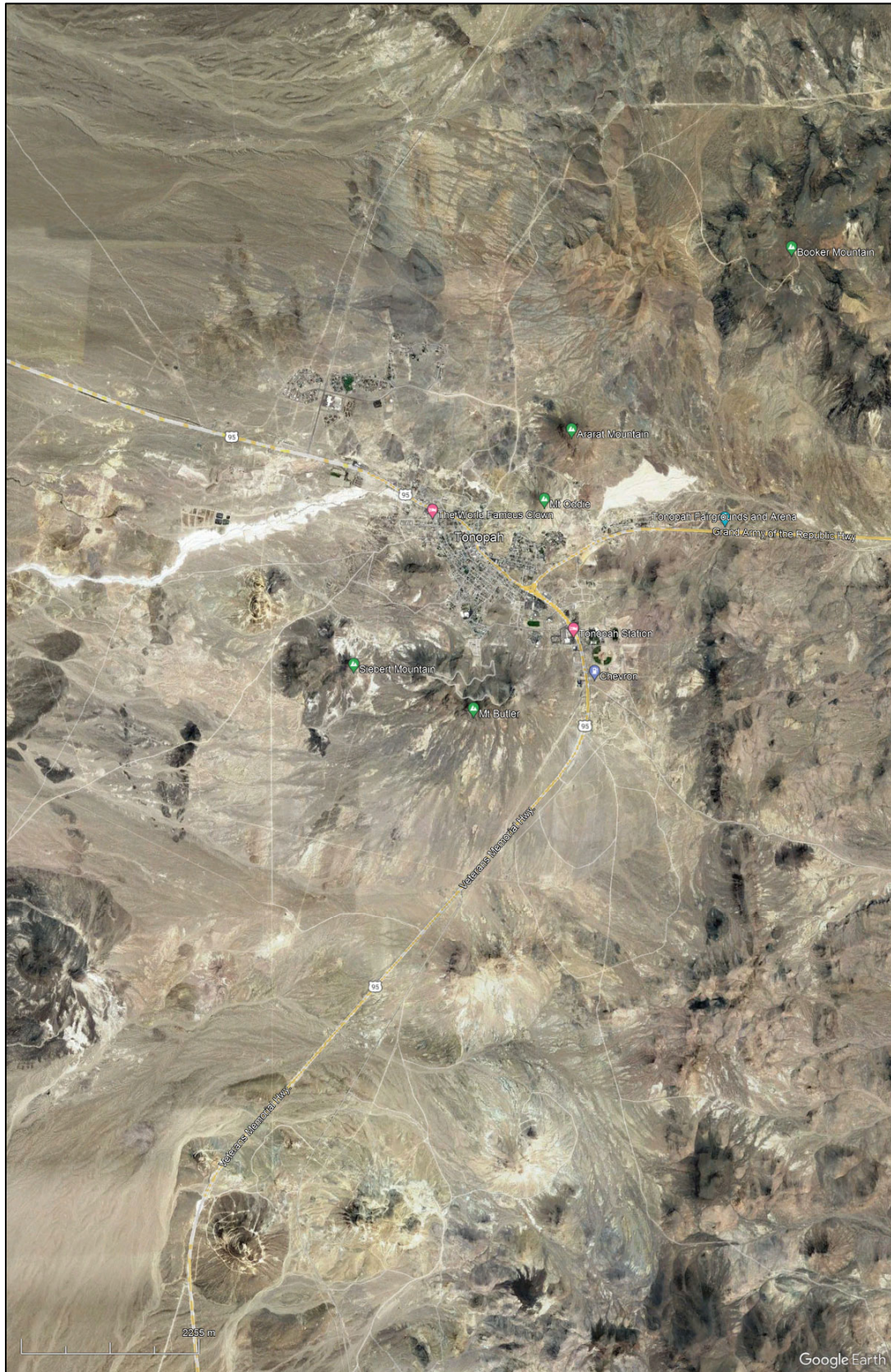


Figure 5: Satellite view of Tonopah mining district





Figure 5: Satellite view of Goldfield mining district. Note the innumerable prospecting sites to the E and NE town, marked by the bleached altered mineralized rock.





Figure 6: Satellite view of Beatty mining districts, to the N and E (Bare Mtn.) of Beatty.





Figure 7: Satellite view of North Bullfrog showing major prospects. Note the drill roads as grid-pattern in flat areas, and along hillsides elsewhere.





Figure 8: Satellite view of Bullfrog – Bare Mountain district. Drill roads are everywhere but difficult to see due to the alteration.





Figure 9: Satellite view of Silicon project, E. Bullfrog.



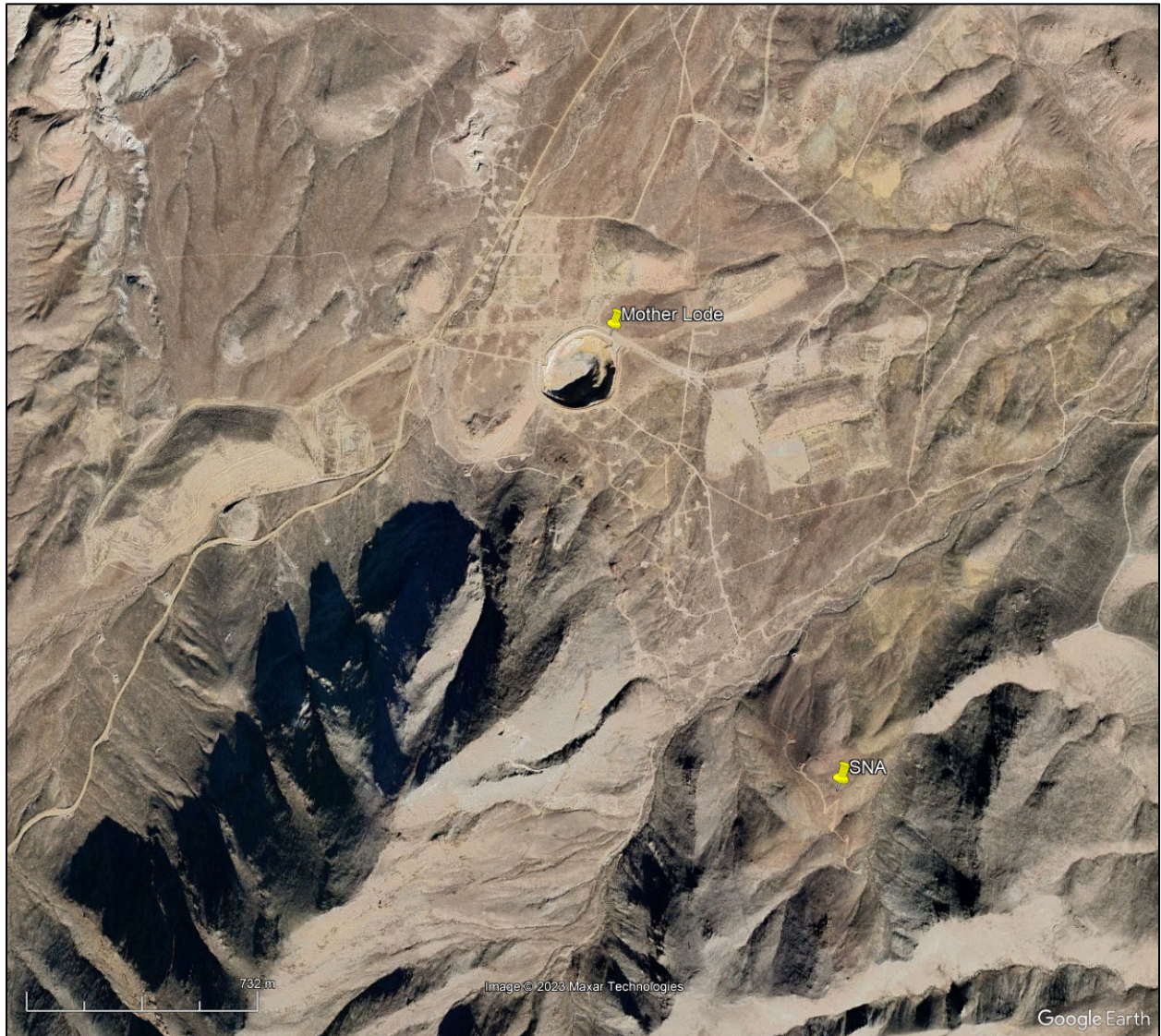


Figure 10: Satellite view of Mother Lode project, E. Bullfrog.





Figure 11: Satellite view of Historic Bullfrog (idled).